

College Park Historic District  
Name of Property

Pierce County, WA  
County and State

## Continuation Sheets

### A. HISTORIC MAPS AND IMAGES:



April 9, 1922. View north up Pine street at North 8<sup>th</sup> street towards the College Park District neighborhood, Marvin Boland Collection, Tacoma Public Library. Congregation of Epworth United Methodist Church marching to site of new church at 710 S. Anderson Street



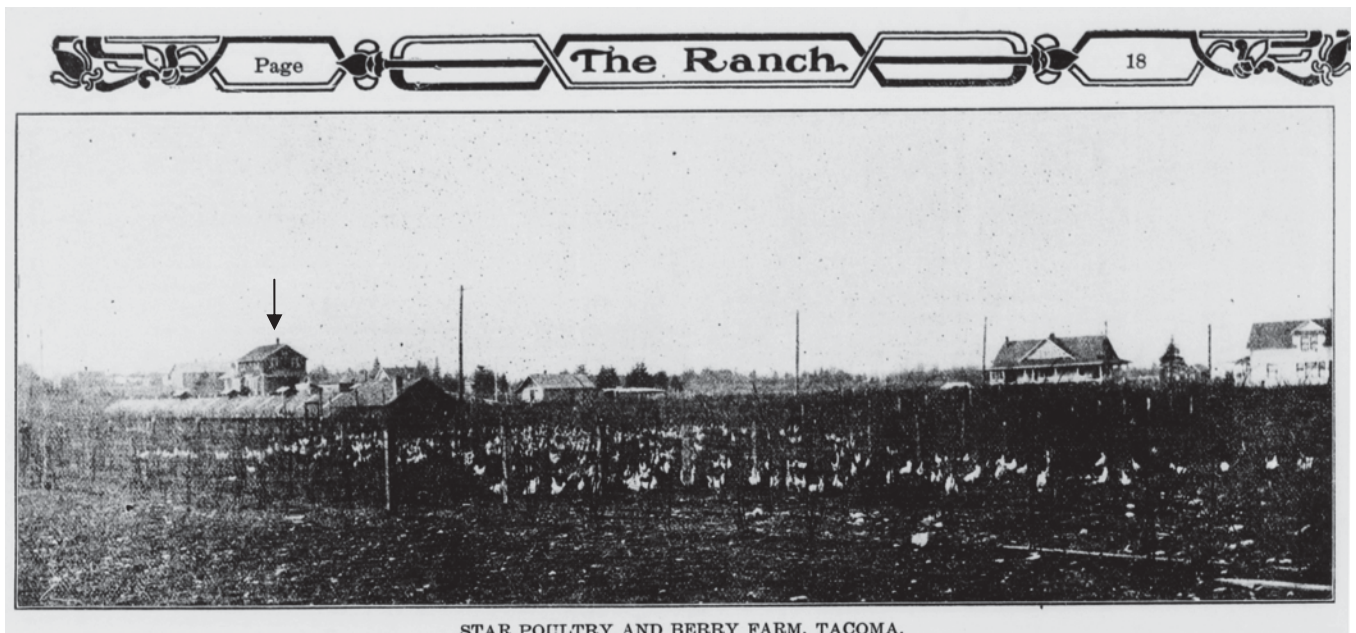
October 2, 1924 View east from Jones Hall College of Puget Sound towards the College Park District two blocks away, 15<sup>th</sup> street on left, Marvin Boland Collection, Washington State Historical Society.

College Park Historic District  
Name of Property

Pierce County, WA  
County and State



Star Berry and Poultry Farm 1907, view northeast from approximately North 12<sup>th</sup> street and Lawrence, House on Left is Govnor Teats Residence on 13th and Alder (University of Puget Sound, House in upper center of photograph is 1201 Alder. The Farm was developed as the College Addition. Washington State Historical Society Collection.

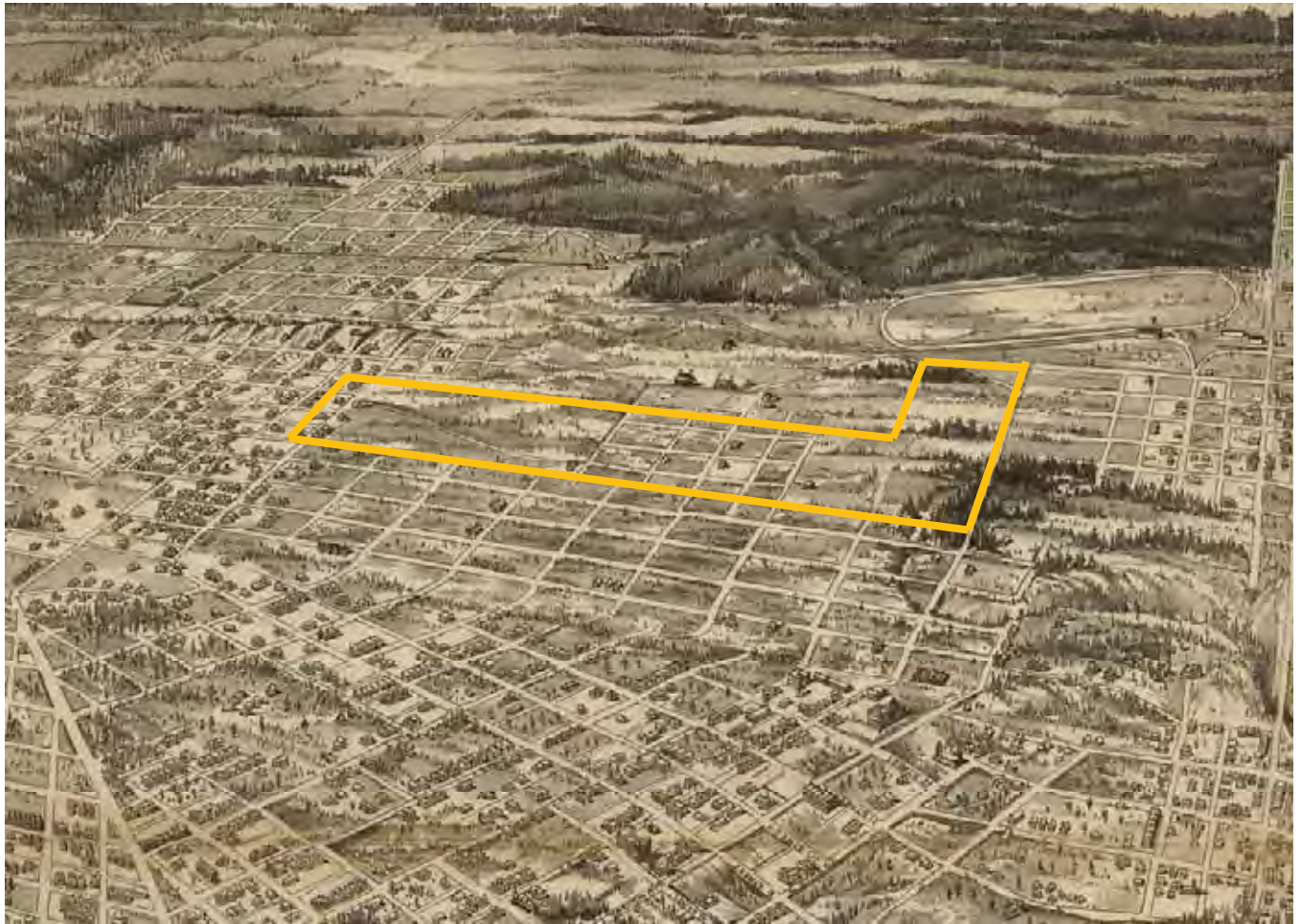


Star Poultry and Berry Farm, view southeast, The Ranch Magazine 1911 May 01, pg. 18  
1201 North Alder to left in image, Govnor Teats House second from Right.



College Park Historic District  
Name of Property

Pierce County, WA  
County and State



Tacoma City 1893 portion of map publish by J. R. McIntyre Tacoma, College Park District in Center of Image

College Park Historic District  
Name of Property

Pierce County, WA  
County and State

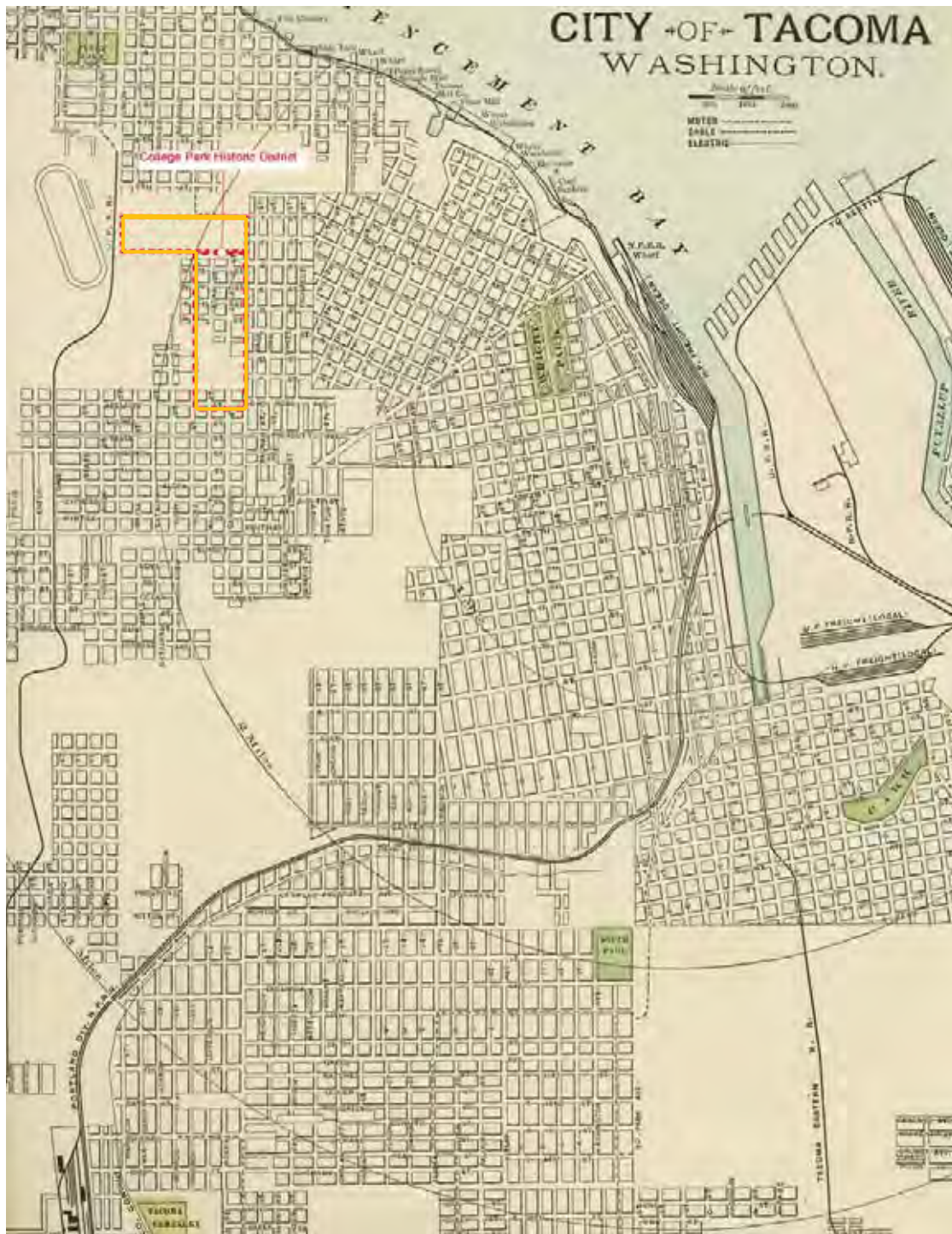


USGS Map - North Tacoma



College Park Historic District  
Name of Property

Pierce County, WA  
County and State



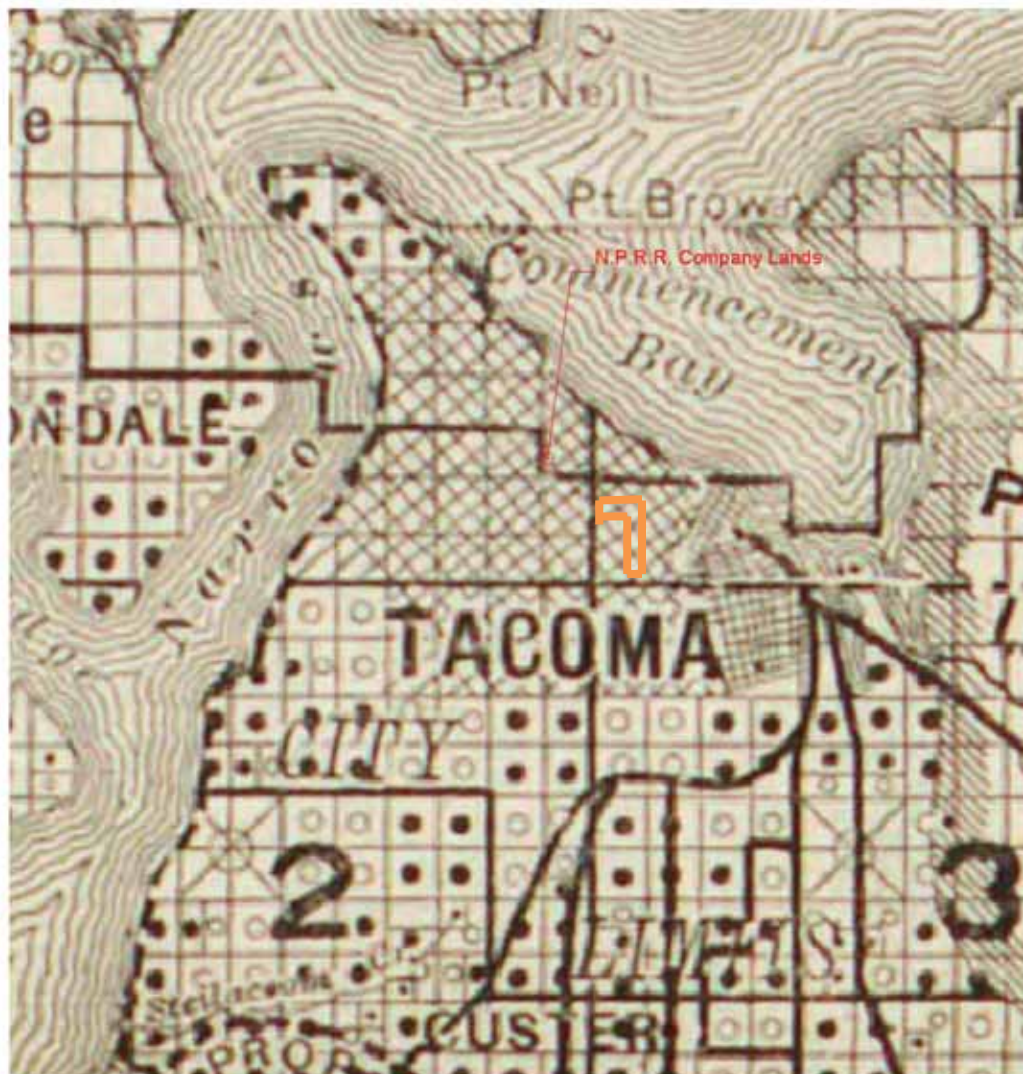
1891 Map of Tacoma, Allen Mason's Map of Tacoma

College Park Historic District  
Name of Property

Pierce County, WA  
County and State



EXPLANATION.	
N. P. R. I. CO. LANDS, . . . . .	[Symbol]
N. P. R. I. CO. LANDS SOLD, . . . . .	[Symbol]
U. S. GOVERNMENT LANDS, . . . . .	[Symbol]
U. S. GOVERNMENT LANDS ENTERED, . . . . .	[Symbol]
SCHOOL SECTIONS, . . . . .	[Symbol]

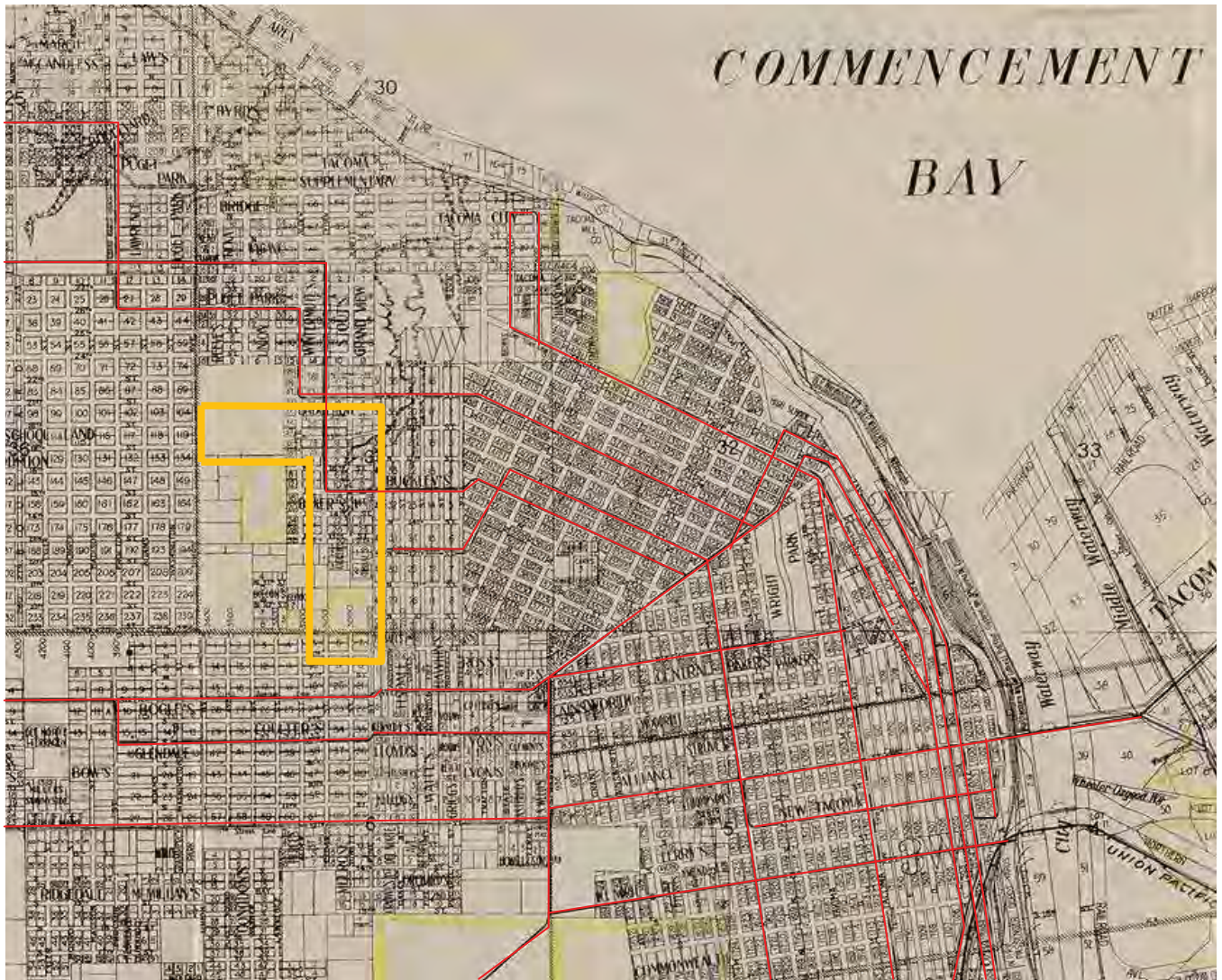


1892 N. P. R. R. Lands Map, Washington State Archives collection



College Park Historic District  
Name of Property

Pierce County, WA  
County and State

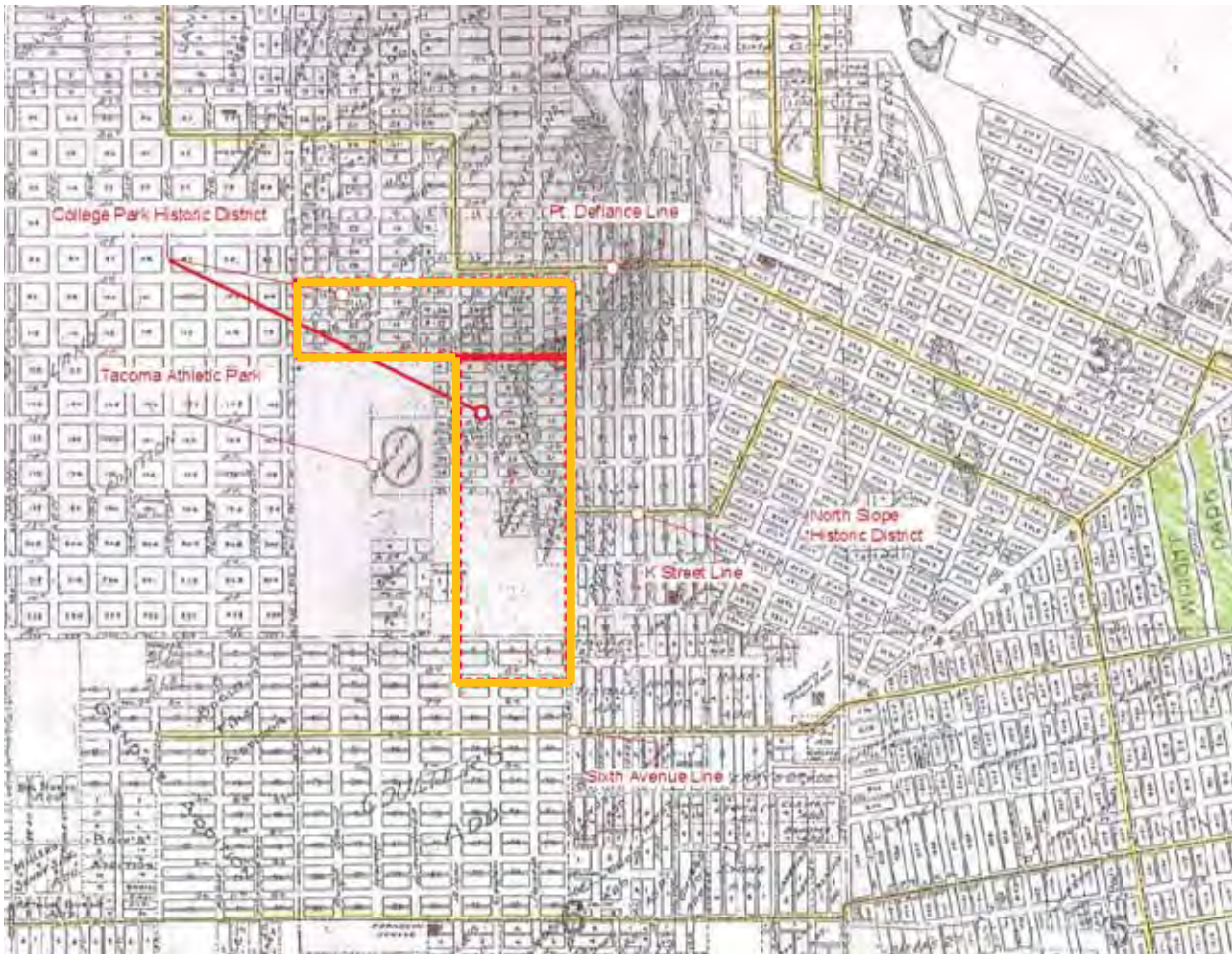


1907 Map of Tacoma, D.H. White, Washington State Archives collection, showing street car routes through District in red.



College Park Historic District  
Name of Property

Pierce County, WA  
County and State

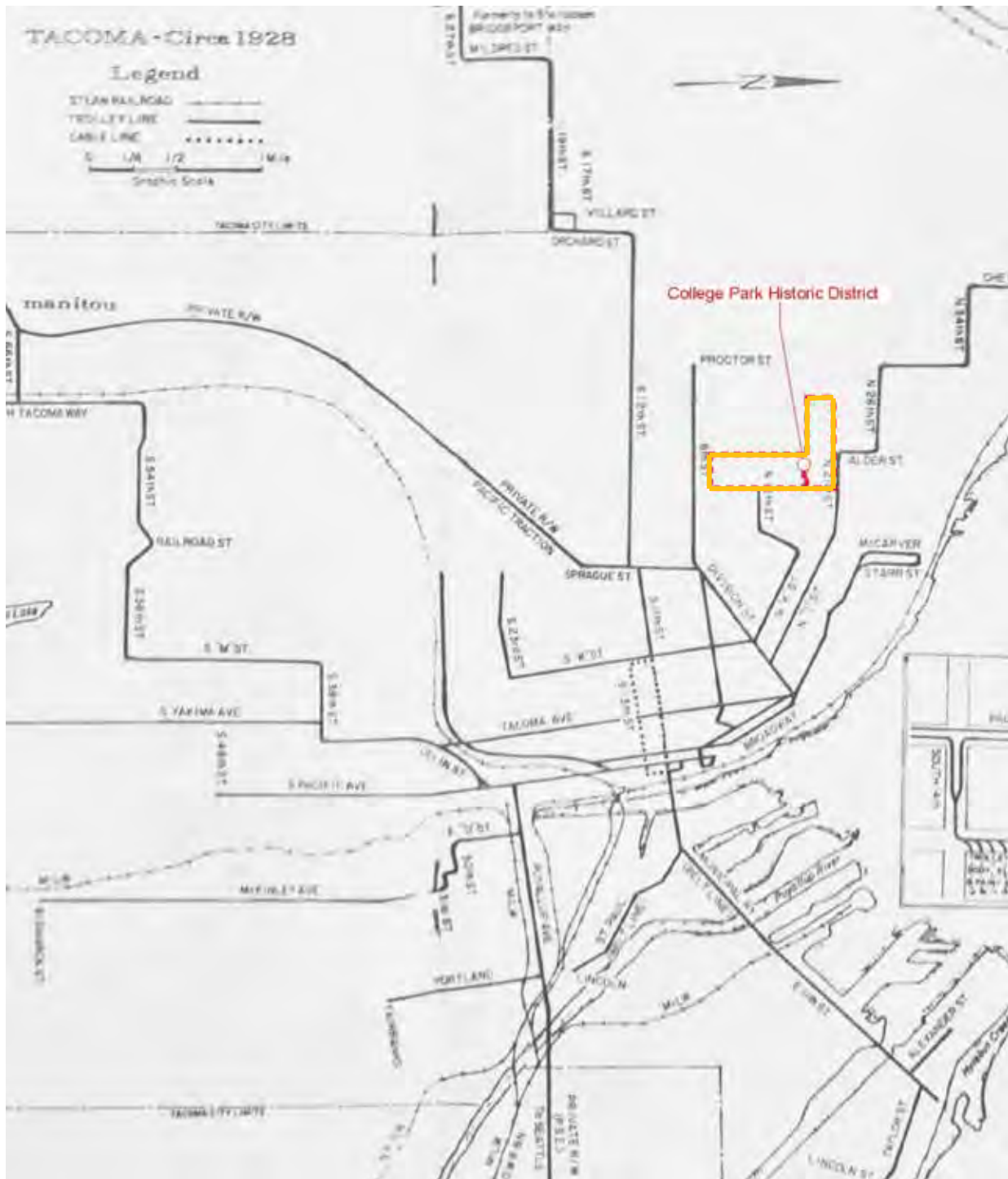


Ca.1915 City of Tacoma Map with Street Car routes



College Park Historic District  
Name of Property

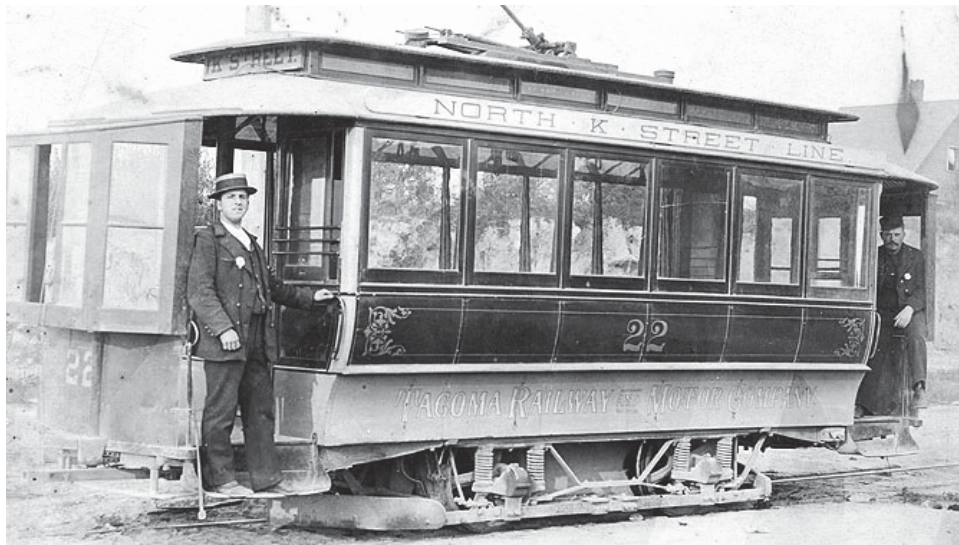
Pierce County, WA  
County and State



1928 City of Tacoma Street Car Map

College Park Historic District  
Name of Property

Pierce County, WA  
County and State



Tacoma Railway and Motor Co, North K Street Line, ca. 1895, Photographer unknown, WSHSM Collection



1893 Sixth Avenue Trolley, Glendale was west of the district near present day Proctor Street, Photographer unknown



College Park Historic District  
Name of Property

Pierce County, WA  
County and State



Point Defiance Tacoma & Edison Railway Co. Trolley, West of K St. Line ca. 1888, Tacoma Public Library collection, photographer unknown



Gordon R. Badgerow  
Badgerow Addition



John S. Baker  
Bakers First Addition



Govnor Teats  
College Addition



John C. Bullitt  
Bullitt Addition

The four land developers behind the four largest platted additions in the district.





College Park Historic District  
Name of Property

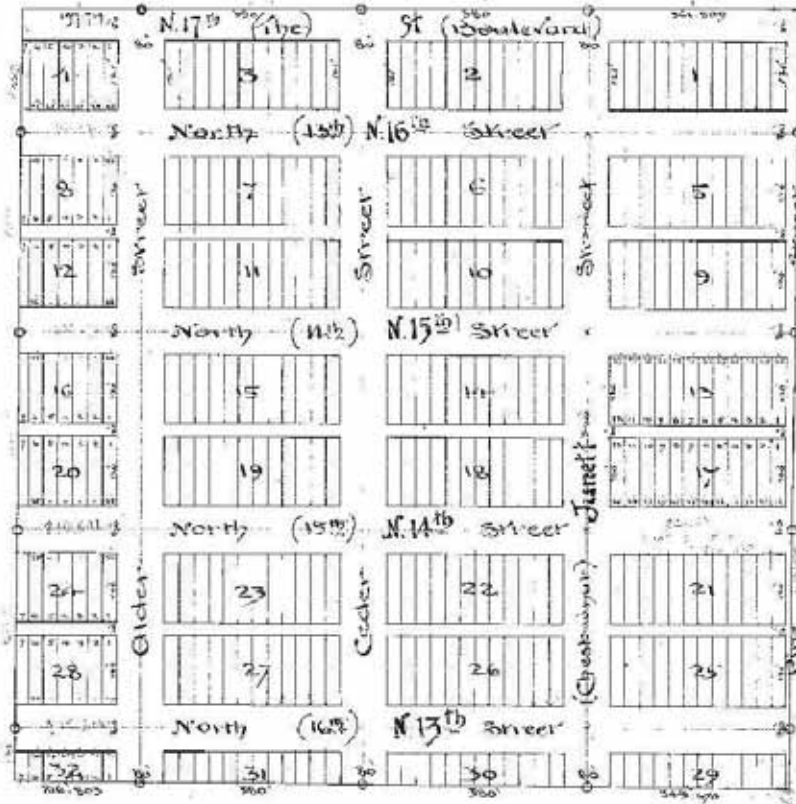
Pierce County, WA  
County and State

Baker's 1st Add.

Book 2, Page 118.

All of the N.E. 1/4 of the S.W. 1/4 of Sec. 31 T.21. N. R. 3 E.

2-2-1889



Baker First Addition 1889, City of Tacoma

College Park Historic District  
 Name of Property

Pierce County, WA  
 County and State

## COLLEGE ADDITION TO TACOMA, WASHINGTON

Scale 1 inch to 100 feet.

This is to certify that Erie Land Company, a corporation organized and existing under the laws of the State of Washington, having its principal place of business at Tacoma, Washington, in a quarter of the Northwest quarter (NW 1/4) of the Southeast quarter (SE 1/4) of the Southwest quarter (SW 1/4) of Township Twenty-one (21), North of Range Three (3) East of T. 7E, and containing ten acres more or less, have caused the same to be surveyed and platted as shown herein, to be hereof known as College Addition to Tacoma, Washington, and that the said Company hereby donates and dedicates to the use of the public forever the streets and alleys shown hereon, and the said Erie Land Company, for itself, its successors and assigns, waives all claims for damages to the property included in the plat by reason of any cuts or fills made in the streets and alleys therein or the original grading of the street, and the said corporation further certifies and swears that it is the sole owner of the land above described and that the land covered by the streets and alleys shown is free from all incumbrances including tax.

In witness whereof the said corporation has caused these presents to be signed by its President and Secretary, and sealed with its corporate seal this 18th day of July, 1923, pursuant to and by authority of a resolution of its Board of Trustees, duly passed and entered on its records.

Erie Land Company  
 By Ernest Leach  
 its President,  
 Attest, Ralph Teats  
 its Secretary.

I hereby certify that I have surveyed the within described tract, that this map is correct and that stone monuments are placed at points indicated by circles (○).

J. H. White  
 Civil Engineer.

Tacoma, Wash. Aug 16<sup>th</sup> 1923.  
 I hereby certify that there are no unpaid State or County taxes on the within described property.

E. W. M. Mack  
 Treasurer Pierce County, Washington.

Approved by the City Council of the City of Tacoma, Washington, this 17th day of August, 1923.

A. T. Haworth  
 President of City Council.  
Atlee Genevieve Martin  
 City Clerk.

Approved Aug. 17<sup>th</sup> 1923. Approved Aug. 17<sup>th</sup> 1923.

A. T. Haworth Mayor. Edith Harrison Commissioner of Public Works.

Approved Aug. 14 1923.

J. Emery  
 City Engineer.

Compared by \_\_\_\_\_ Indexed by \_\_\_\_\_

Filed and recorded at the request of this day of July, 1923, at minutes past \_\_\_\_\_ of record of plats on page \_\_\_\_\_ of Auditor of Pierce County, Washington.

C. M. Rissell  
 Notary Public in and for said State sitting at Tacoma, Pierce County, Washington.

College Addition 1923, City of Tacoma



College Park Historic District  
 Name of Property

Pierce County, WA  
 County and State

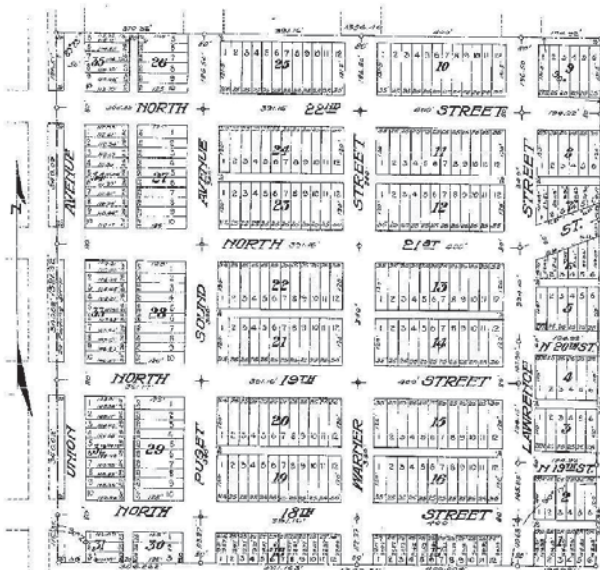
# THE BULLITT ADDITION

TO THE CITY OF TACOMA

Scale 1 in. = 200 ft.

Vol. 9, Page 61

5-5-1909



—THIS IS TO CERTIFY— That the Fidelity Trust Company of Tacoma, a corporation organized and existing under the laws of the State of Washington, having its principal place of business at Tacoma, Washington, sole owner of the following described tract of land, — the Southeast quarter of the Northwest quarter of Section 31, Township 21 North, Range 3 East of the Willamette Meridian, has caused the same to be surveyed and platted as shown on this map, to be hereafter known as —

“THE BULLITT ADDITION TO THE CITY OF TACOMA”

and that we hereby donate and dedicate to the use of the public forever the streets and alleys shown hereon, and the said Fidelity Trust Company of Tacoma, for itself, its successors and assigns, waives all claims for damages to the property included in the plat by reason of any cuts or fills made in the streets and alleys therein in the original grading of the streets, and the said corporation further certifies and avers that it is the sole owner of the land above described and that the land covered by the streets and alleys shown are free from all incumbrances including taxes.

In witness whereof the said corporation has caused these presents to be signed by its Second Vice President and Secretary and sealed with its corporate seal this \_\_\_\_\_ day of \_\_\_\_\_ 1909, pursuant and by authority of a resolution of its Board of Trustees duly passed and entered on its records.

The Fidelity Trust Company of Tacoma  
 By \_\_\_\_\_  
 Its Second Vice President  
 Attest \_\_\_\_\_  
 Its Secretary

STATE OF WASHINGTON )  
 COUNTY OF PIERCE ) ss.

On this \_\_\_\_\_ day of \_\_\_\_\_ 1909, before me personally appeared R.C. Hoffmann and A.S. Prichard both known to me the Second Vice President and Secretary respectively of the Fidelity Trust Company of Tacoma, the corporation that executed the within and foregoing instrument and acknowledged the said instrument to be the free and voluntary act and deed of said corporation for the uses and purposes therein mentioned, and on oath stated that they were authorized to execute said instrument, and that the seal appended is the corporate seal of said corporation. In witness whereof, I have hereunto set my hand and affixed my official seal this day and year in this certificate first above written.

Notary Public and for said State, residing at Tacoma, Pierce County, Washington.

I hereby certify that I have surveyed the above described tract, that this map is correct, and that stone monuments are placed at points indicated by circles.

Tacoma \_\_\_\_\_ 1909

I hereby certify that there are no unpaid state or county taxes on the property described within

Approved by the City Council of the City of Tacoma, Washington this \_\_\_\_\_ day of \_\_\_\_\_ 1909 Treasurer Pierce County, Washington.

Resident of City Council

Attest \_\_\_\_\_ City Clerk

Approved \_\_\_\_\_ 1909 Mayor

Approved \_\_\_\_\_ 1909

City Engineer

Approved \_\_\_\_\_ 1909

Commissioner of Public Works

Filed and recorded at the request of \_\_\_\_\_ this \_\_\_\_\_ day of \_\_\_\_\_ 1909, at \_\_\_\_\_ minutes past \_\_\_\_\_ o'clock \_\_\_\_\_ M. on page \_\_\_\_\_ of record of Maps

Indexed by \_\_\_\_\_ Compared by \_\_\_\_\_ and \_\_\_\_\_ Auditor of Pierce County, Washington.

The Bullitt Addition 1909, City of Tacoma

College Park Historic District  
 Name of Property

Pierce County, WA  
 County and State

# MULLER-LINDAHL-ADDITION

TO  
 TACOMA -  
 Pierce County, Washington.  
 Scale 1 inch=100 Feet.

UNPLATTED

State of Washington) 55  
 County of Pierce

J. Anton Muller, President of the Muller-Lindahl Investment Company, having been first duly sworn, on his oath says that said Company is the sole owner of the land described in the dedication given below, and that the land covered by the streets and alleys as shown upon the accompanying plat are free from all incumbrances including taxes, and that he has duly Subscribed and sworn to before me this 2 day of April 1910

Notary Public in and for the State of Washington residing in Tacoma, in said State.  
 My commission expires April 1, 1912

KNOW ALL MEN BY THESE PRESENTS: That the Muller-Lindahl Investment Company, a corporation organized and existing under the laws of the State of Washington having its principal place of business in Tacoma, Washington, does hereby lay out and plat into blocks, lots, streets and alleys the following described tract of land to-wit: All of the South-east Quarter of the South-west Quarter of the South-west Quarter of the South-west Quarter of the South-west Quarter of Section Thirtynine (39), Township Twentyone (21), North, Range Three (3) East, Willamette Meridian, Pierce County, Washington, and does hereby dedicate to the public for its use forever all of the streets and alleys shown hereon, and does hereby waive any and all claims for damages to themselves, grantees and assigns for the original grading of any street or alley contained in the above described plat, and does hereby certify that they are the sole owners of the above described property and that said land is free from all incumbrances including taxes.

In witness whereof the said Muller-Lindahl Investment Company has caused these presents to be signed by its President and attested by its Secretary and sealed with its corporate seal this 7 day of March 1910, pursuant to and in accordance with a resolution of its Board of Trustees duly passed and entered upon its records.

MULLER-LINDAHL INVESTMENT CO.  
 By J. Anton Muller its President  
 Attest J. A. Lindahl its Secretary

Tacoma, Washington March 7, 1910  
 I hereby certify that I have surveyed the above described tract, that this map is correct, and that stone monuments have been placed at points shown by circles.  
 J. G. Baker  
 Civil Engineer

Approved \_\_\_\_\_ 19\_\_\_\_  
 City Engineer

Approved \_\_\_\_\_ 19\_\_\_\_  
 As to form of dedication  
 Commissioner of Public Works

Approved by the City Council of the City of Tacoma  
 this \_\_\_\_ day of \_\_\_\_ 19\_\_\_\_  
 Attest \_\_\_\_\_ City Clerk

Approved \_\_\_\_\_ 19\_\_\_\_  
 Mayor

Filed and recorded at the request of \_\_\_\_\_  
 this \_\_\_\_ day of \_\_\_\_ 19\_\_\_\_ at \_\_\_\_\_ minutes past \_\_\_\_ o'clock  
 and recorded on page \_\_\_\_ Vol 9 of Record of Plats.

Auditor of Pierce County, Washington.

Muller-Lindahl Addition 1912, City of Tacoma



College Park Historic District  
Name of Property

Pierce County, WA  
County and State



1930 Aerial Photograph, City of Tacoma



College Park Historic District  
Name of Property

Pierce County, WA  
County and State



1940 Aerial Photograph, City of Tacoma



College Park Historic District

Name of Property

Pierce County, WA

County and State



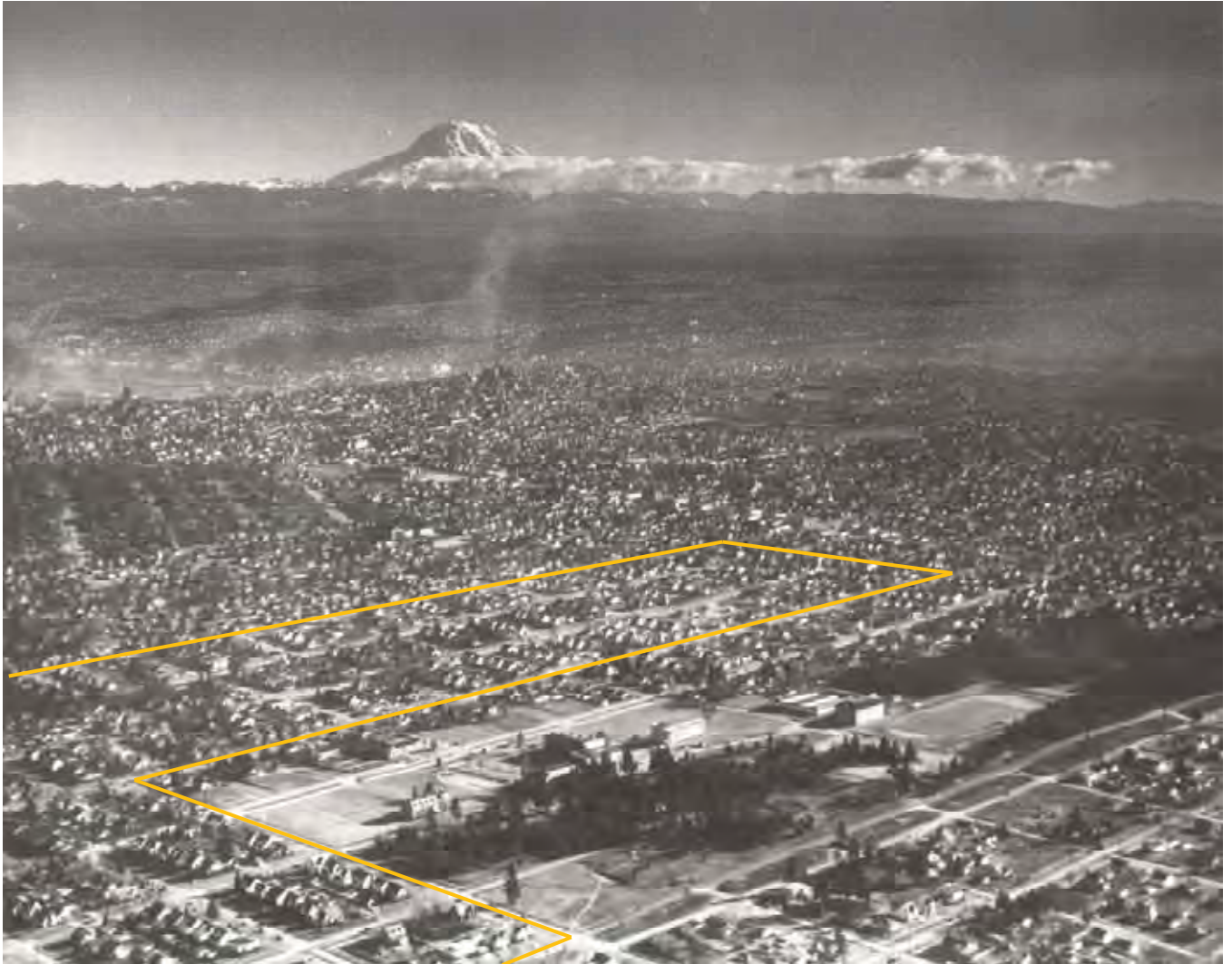
1941Aug18 - N 21st Street & Union Avenue, view south district on left, Tacoma Public Utilities Collection



1941Aug18 - N. 21<sup>st</sup> Street & Union Avenue, view east district on right, Tacoma Public Utilities Collection

College Park Historic District  
Name of Property

Pierce County, WA  
County and State

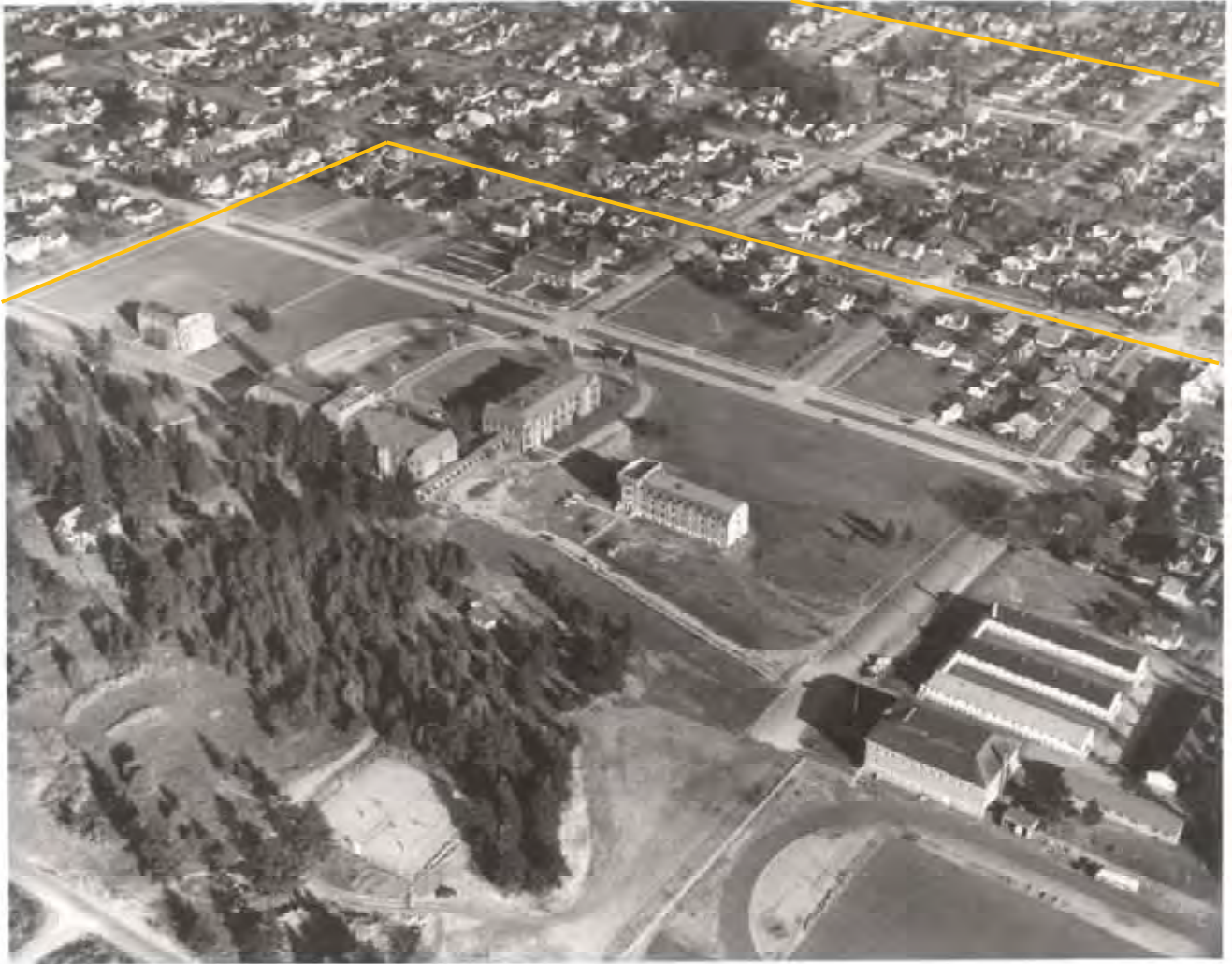


1947 View southeast, Richards's collection, Tacoma Public Library



College Park Historic District  
Name of Property

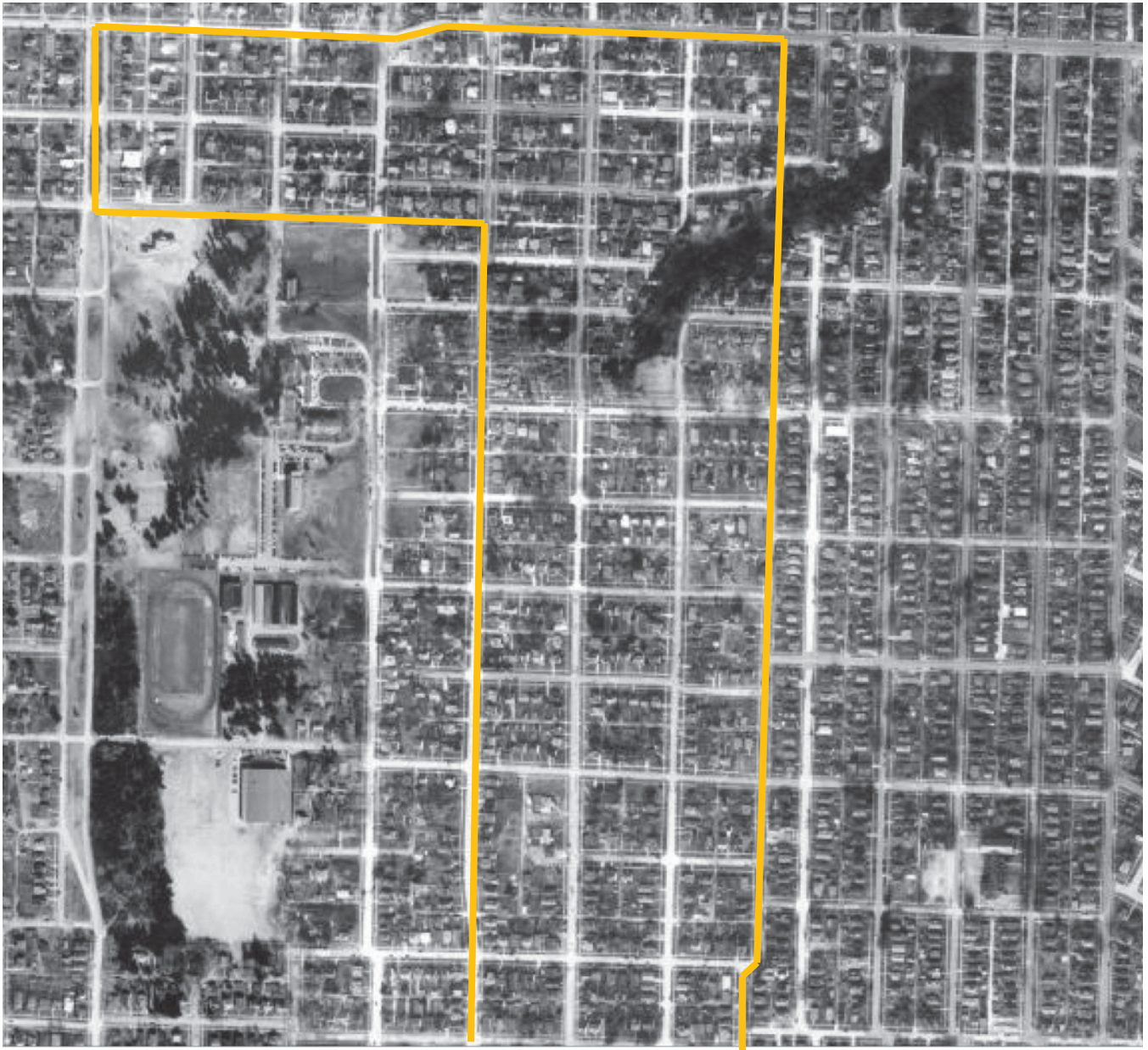
Pierce County, WA  
County and State



1947 View northeast, Richards Collection, Tacoma Public Library

College Park Historic District  
Name of Property

Pierce County, WA  
County and State

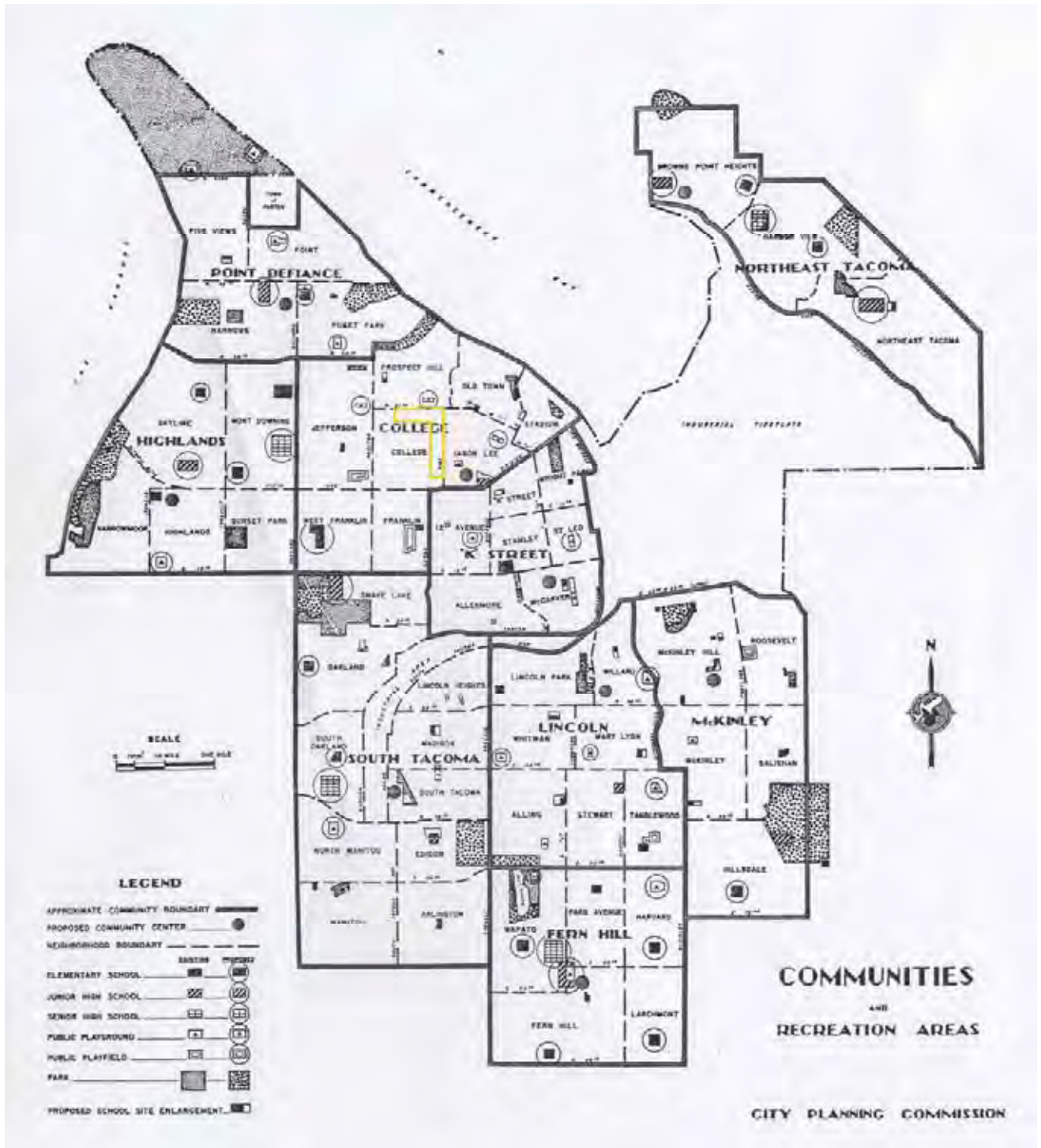


1950 Aerial Photograph, City of Tacoma



College Park Historic District  
Name of Property

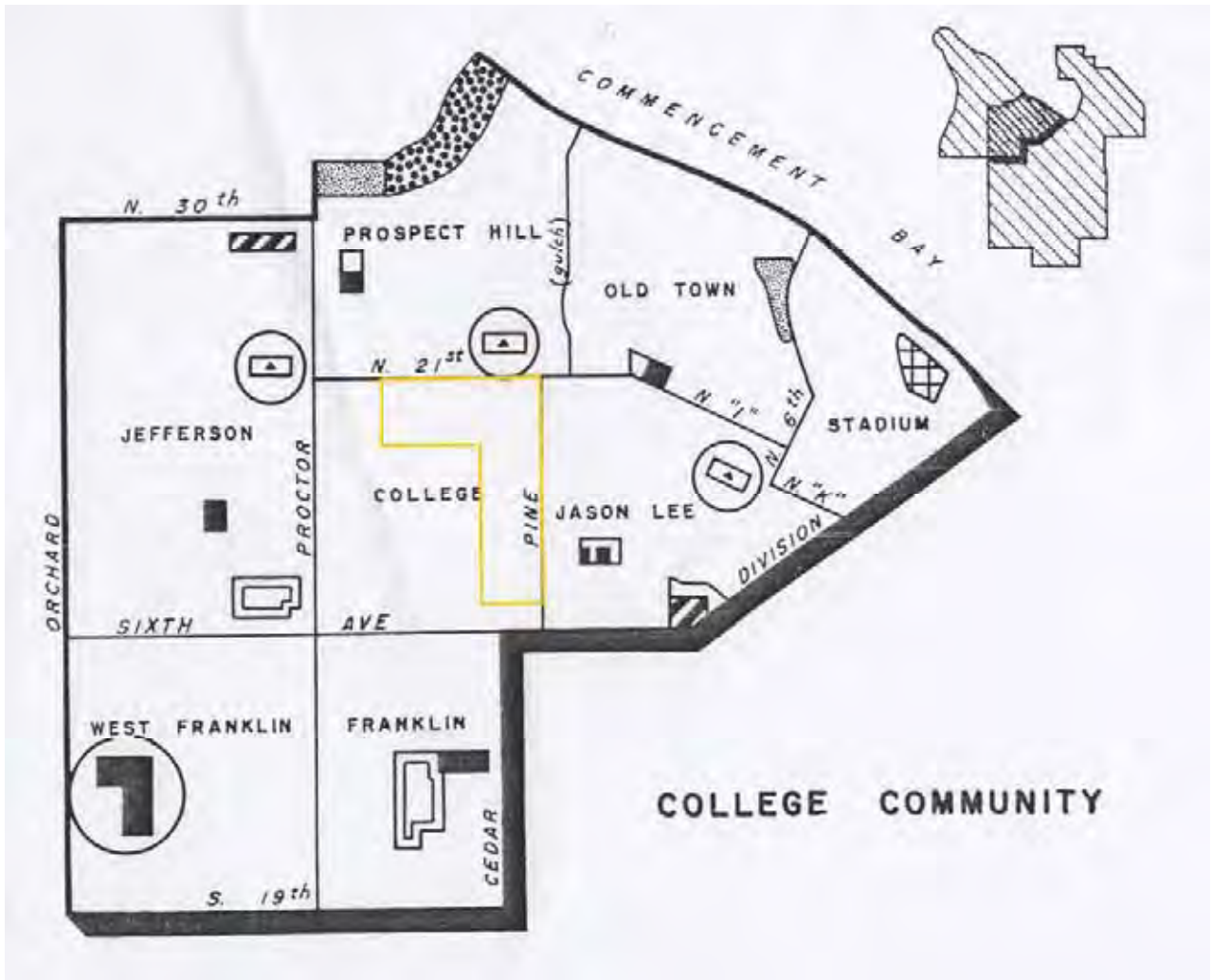
Pierce County, WA  
County and State



1952 City of Tacoma Master Plan – Communities and Recreation Areas

College Park Historic District  
Name of Property

Pierce County, WA  
County and State



### COLLEGE NEIGHBORHOOD

The College of Puget Sound occupies the center of this neighborhood and so limits the population possibilities of this neighborhood. No recreation areas are indicated in this neighborhood on the PLATE XII above, but it is hoped that a part of the College Campus may be set aside for childrens' play space or that a playground is secured on the perimeter of this campus.

1952 City of Tacoma Master Plan - College Neighborhood



College Park Historic District  
Name of Property

Pierce County, WA  
County and State



1939 Aerial View, East of UPS, University of Puget Sound, Collins Library Collection



1954 Aerial View, northeast of UPS view southwest, University of Puget Sound, Collins Library Collection



1954 Aerial View, view north from UPS. University of Puget Sound, Collins Library Collection



College Park Historic District  
Name of Property

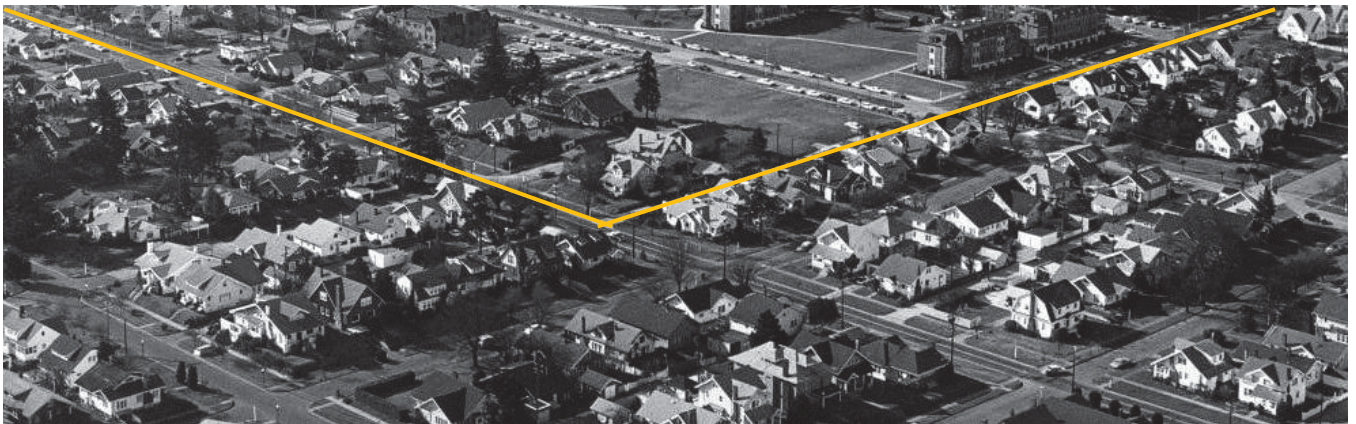
Pierce County, WA  
County and State



1954 Aerial View, north of UPS view south, University of Puget Sound, Collins Library Collection



1954 View from Jones Hall east over quadrangle up N. 15<sup>th</sup> Street, University of Puget Sound, Collins Library Collection



1968 Aerial View, northeast of UPS view southwest, University of Puget Sound, Collins Library Collection



College Park Historic District  
Name of Property

Pierce County, WA  
County and State

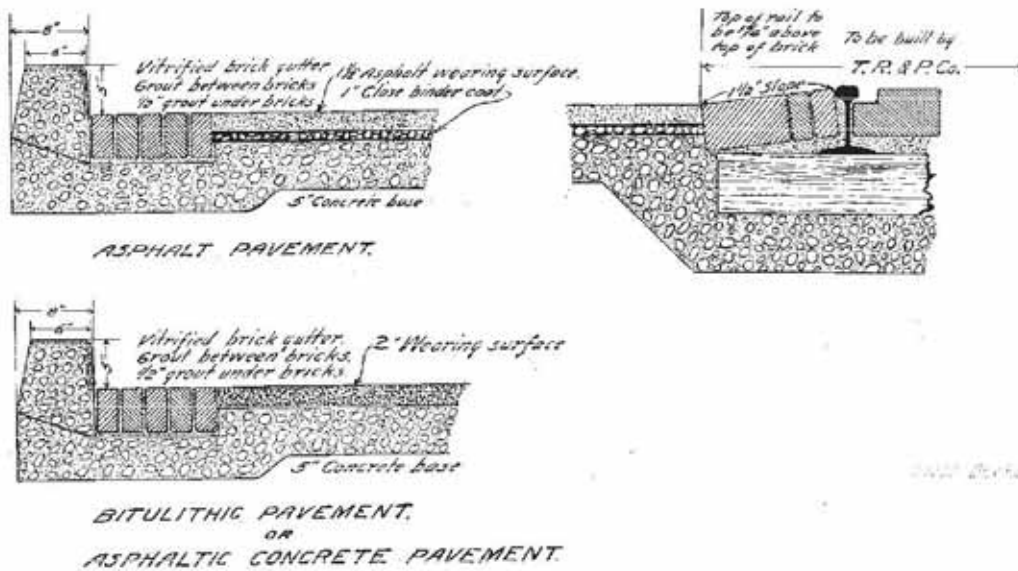


1973 Aerial Photograph, City of Tacoma

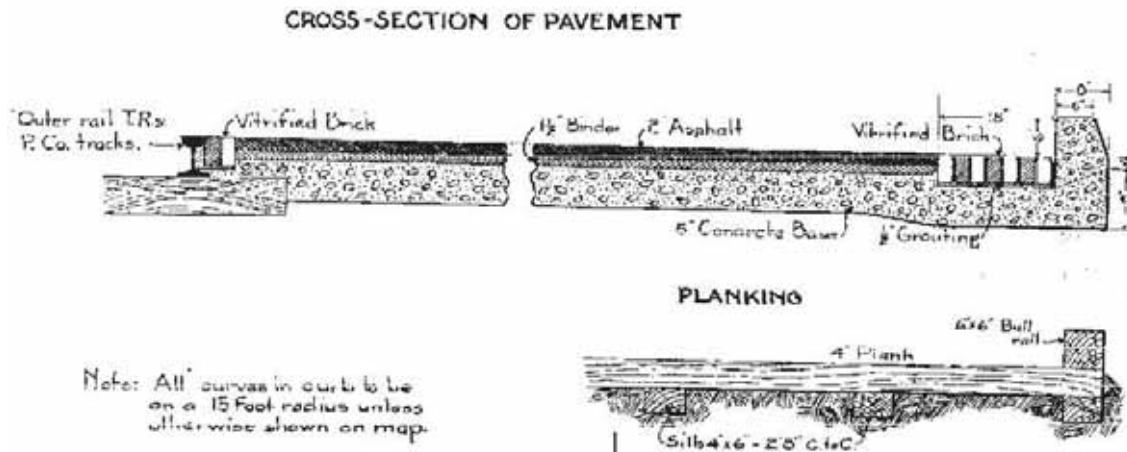
**B. STREETS & SIDEWALKS:**

College Park Historic District  
 Name of Property

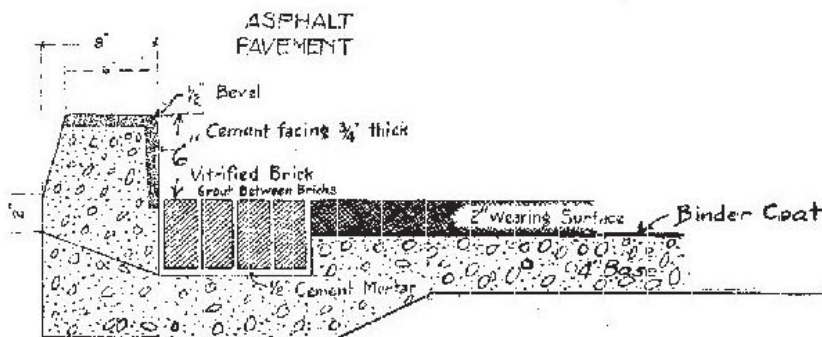
Pierce County, WA  
 County and State



Gutter and rail detail N. 12th & Pine Street, 1913, City of Tacoma Collection



Gutter and rail detail N. 21<sup>st</sup> Street, 1908, City of Tacoma Collection

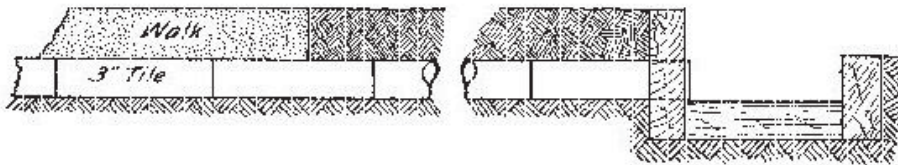


Gutter Detail N. Cedar, 1913, City of Tacoma Collection



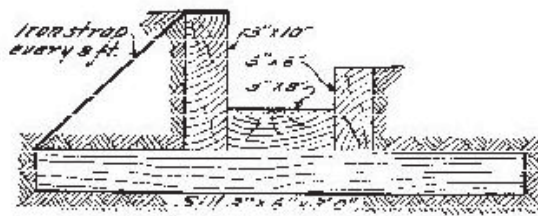
College Park Historic District  
Name of Property

Pierce County, WA  
County and State



*Method of connecting tile, to gutter in place.*

Wooden Curb Detail N. 14th Street, 1912, City of Tacoma Collection



*Sectional view of curb and gutter*

Wooden Curb Detail N. 14th Street, 1912, City of Tacoma Collection

College Park Historic District  
Name of Property

Pierce County, WA  
County and State



Example of brick gutter, N. Cedar Street north of N. 15<sup>th</sup> St.



Example of typical neo-historic street lights, N. 13<sup>th</sup> St.



Examples of Street names cast into sidewalks

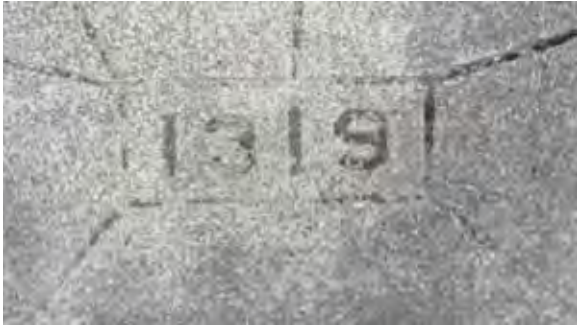


College Park Historic District

Name of Property

Pierce County, WA

County and State



Examples of House Numbers cast in to pathways



Examples of Contractor stamp cast into sidewalks

College Park Historic District  
Name of Property

Pierce County, WA  
County and State

**C. NEWSPAPER ACCOUNTS AND ADVERTISEMENTS:**

**BAKER'S**  
**First Addition,**  
ON SALE  
**JANUARY 30, 1889.**  
Lots \$350, corners \$400.  
HALF CASH. APPLY TO  
**SLAUGHTER & CO.**  
109 South Tenth Street.  
**Albright & Manning,**  
1 & 3 Wright Block.

**BAKER'S FIRST ADDITION**

**TO TACOMA**

Is located in the northeast  $\frac{1}{4}$  of the southwest  $\frac{1}{4}$  of section 31, township 21 north, range 3 east, containing 40 acres. This tract adjoins Buckley's addition on the west, the south side of which fronts on Mason's Boulevard Motor line. This tract is well located, being high and level, and commands a fine view of the bay and surrounding country. The contract for clearing the entire addition has been let to R. B. Mullen, and a force of men under his supervision will commence work on Monday morning. Lots in this addition will be on sale Wednesday morning, January 30, at 10 o'clock. Prices, \$350 for inside and \$400 for corners; half cash, balance in six months, at 10 per cent. interest. Come early and secure lots in the best addition that has been placed on the market this year. For further information apply to

**Albright & Manning, SLAUGHTER & CO.,**  
Cor. Ninth and Railroad. 108 Tenth Street.  
Jan 11

1889 January 27, Tacoma Daily Ledger, Tacoma Public Library



College Park Historic District  
Name of Property

Pierce County, WA  
County and State

# Badgerow Addition to Tacoma, Wash.

**Inside Property — Only Ten Minutes  
From Ninth on Point Car**

Office on the ground where information and terms can be secured. Phone Main 5411

1907 April 28, Tacoma Daily Ledger, Tacoma Public Library

College Park Historic District  
Name of Property

Pierce County, WA  
County and State

Loans, Rentals & Insurance. **H. B. WALTER & CO.,** 216-17 Bankers' Trust Bldg.

**CORNER NORTH 10TH AND I STREETS**  
3 lots opposite Rust's house, \$7,000.

**WING'S ADDITION**  
10 level lots, cheapest in this addition, \$1,000.

**NORTH 17TH AND CEDAR STREETS**  
3 lots on this corner, \$1,200. The Pacific Traction line is building along Cedar street.

**NORTH 17TH AND JUNETT**  
3 lots on this corner, sloping towards the gulch, \$700.

**GUY SYFORD,**  
517 California Bldg.

**\$25 EACH** | \$ 750—Lots 1, 2, 3, Block 912, Park

1907 May 18, Tacoma Times, Library of Congress

**NORTH OF 6th AVENUE**

\$500 cash—6 rooms, 2 lots on North 24th st., 2 blocks from car line. Price \$2500.  
\$500 cash—6 rooms, lot 30x120 feet on North 7th, 1 block from car line for \$2100. Balance \$25 per month at 7 per cent.  
\$300 cash—5 rooms and 1 lot on North Gove st., 1 block from Point Defiance car line. Price \$1600. Balance monthly at 7 per cent.  
\$300 cash—7 rooms and two lots on North 26th st., in School Section. Price \$1500. Balance \$10 per month at 8 per cent.  
\$250 cash—Four lots and house 14x22, with kitchen, near Point Defiance park for \$650—absolute cost of place. Balance \$10 per month and interest. Fine view of mountain and water.  
\$800 cash—5-room bungalow at 3114 No. 8th st., with bath, fireplace and every convenience. A beautiful home for \$2700. Balance on easy terms.  
\$200 cash—Handsome 6-room Swiss chalet and 2 lots, near end of K st. car line. Price \$3500. Balance, value of equity, \$2000, in suitable building lots and remainder payable \$25 monthly.

**NOW IS THE TIME TO BUY. BRING THIS AD. WITH YOU.**

**H. J. SCHWINN & CO, Inc.**  
Chas. E. Cutter, Mgr. Real Estate Sales Dept., 316 Bankers' Trust Bldg.

1909 Jan. 16, Tacoma Times, Library of Congress



College Park Historic District  
Name of Property

Pierce County, WA  
County and State

28

THE COMMERCIAL WEST

Saturday, August 8, 1908



**TACOMA—THE NEW YORK OF THE PACIFIC**

**Come West and Make Money**

LOTS - - \$25.00 AND UP  
\$1.00 per week

ACRE TRACTS \$100.00 AND UP  
\$5.00 per month.

WRITE FOR FREE BOOKLET.

**National Land Investment Co., Inc.**

CAPITAL \$100,000.00

401-421 California Bldg.

TACOMA, WASH.

**FIVE NEW RAILROADS FOR TACOMA**

The Chicago, Milwaukee & St. Paul  
The Union Pacific  
The Gould System

The Chicago & Northwestern  
The Canadian Pacific

All are headed this way. Terminals have already been secured

**Tacoma is the Gateway to the Orient!**

Remember we have been telling you for the past four years that  
Tacoma Real Estate is

**The Safest and Best Investment in the Northwest**

You have missed handsome  
profits if you failed to take our advice, but it isn't too late.

**Tacoma Real Estate Values will Double in the Next Twelve Months.**

**Tacoma Land and Improvement Co.** 119 Eleventh Street,  
TACOMA, U. S. A.

**FIDELITY TRUST CO.**

Tacoma, Washington

Capital, \$300,000 Surplus, \$150,000  
Deposits, \$3,300,000

Transacts a general Banking Business. Accounts of banks and bankers  
solicited and handled on most favorable terms. Correspondence invited.

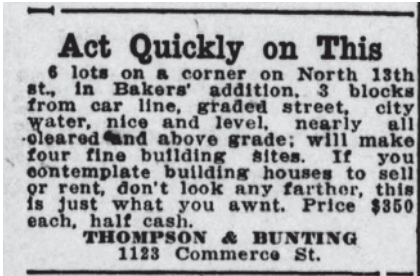
**OLDEST TRUST COMPANY IN WASHINGTON.**

J. C. Ainsworth, Prest. John S. Baker, Vice Prest. P. C. Kauffman, 2nd  
Vice Prest. Arthur G. Prichard, Cash. Forbes P. Haskell Jr., Ass't Cash.

1908 August 08, The Commercial West, Minneapolis MN. (Speculative Advertisement)

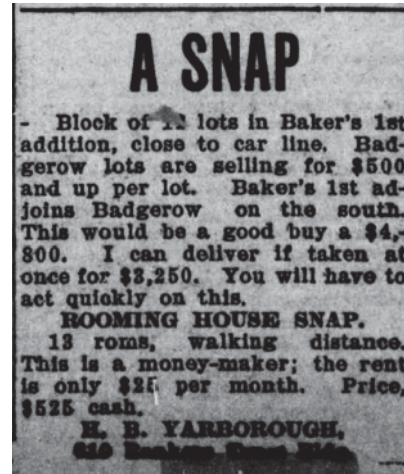
College Park Historic District  
Name of Property

Pierce County, WA  
County and State



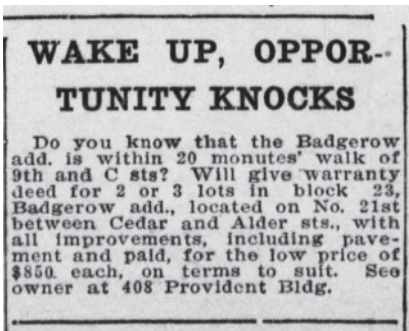
**Act Quickly on This**  
6 lots on a corner on North 13th st., in Baker's addition. 3 blocks from car line, graded street, city water, nice and level, nearly all cleared and above grade; will make four fine building sites. If you contemplate building houses to sell or rent, don't look any farther, this is just what you awnt. Price \$350 each, half cash.  
**THOMPSON & BUNTING**  
1123 Commerce St.

1909 Apr. 16, Tacoma Times, Library of Congress



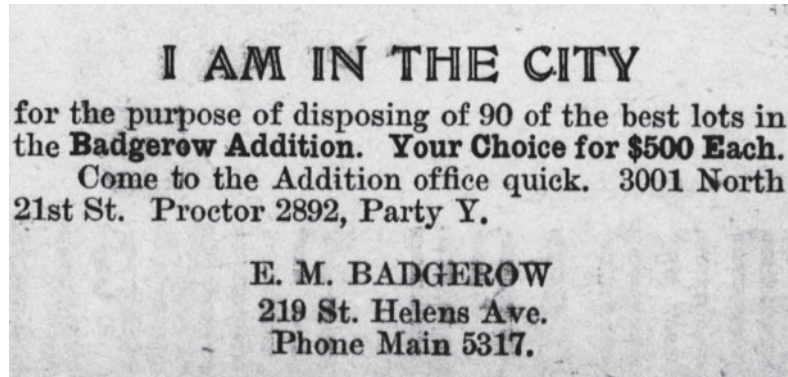
**A SNAP**  
- Block of 12 lots in Baker's 1st addition, close to car line. Badgerow lots are selling for \$500 and up per lot. Baker's 1st adjoins Badgerow on the south. This would be a good buy a \$4,800. I can deliver if taken at once for \$3,250. You will have to act quickly on this.  
**ROOMING HOUSE SNAP.**  
13 rooms, walking distance. This is a money-maker; the rent is only \$25 per month. Price, \$525 cash.  
**E. B. YARBOROUGH,**  
616 Baker's 1st Add.

1909 Jan. 16, Tacoma Times, Library of Congress



**WAKE UP, OPPORTUNITY KNOCKS**  
Do you know that the Badgerow add. is within 20 monutes' walk of 9th and C sts? Will give warranty deed for 2 or 3 lots in block 23, Badgerow add., located on No. 21st between Cedar and Alder sts., with all improvements, including pavement and paid, for the low price of \$850 each, on terms to suit. See owner at 408 Provident Bldg.

1910 Nov. 05, Tacoma Times, Library of Congress



**I AM IN THE CITY**  
for the purpose of disposing of 90 of the best lots in the **Badgerow Addition**. **Your Choice for \$500 Each.**  
Come to the Addition office quick. 3001 North 21st St. Proctor 2892, Party Y.  
**E. M. BADGEROW**  
219 St. Helens Ave.  
Phone Main 5317.

1912 Dec. 07, Tacoma Times, Library of Congress



College Park Historic District  
Name of Property

Pierce County, WA  
County and State

### LOTS ONLY MILE OUT AT WILDWOOD PRICES

**Muller-Lindahl Addition, Adjoining the  
Favorite Buckley Tract, Promises to  
Be Season's Residence Sub-  
division Sensation.**

The opportunity to buy a choice residence site, hardly more than a mile distant from Pacific avenue and 11th street, surrounded on all sides by new and attractive homes, at prices commonly and successfully maintained on residence property "way out in the wilds" is offered by Thompson & Lindahl in the Muller-Lindahl addition, marketed two weeks ago.

The addition is among those which bids fair to be to this season's realty market what the eagerly awaited "big seller" is to the book business. Only because the original owners of the addition withheld the parcel from the market years after everything else around it was sold out and built up, is such a chance available to the investor or home builder now.

There are 15 acres in the Muller-Lindahl addition, used until early spring as a cow pasture. On one side is the Buckley addition, since the day it was platted the best all round "seller" in the city. To the south is Coulter's addition, another favorite, while on the west are Balcom's and Glyndon's additions, both built up to cozy bungalows and substantial residences.

One block away, to the north, is the terminus of the Tacoma Railway & Power company's K street car line. Governor Teat's famed "Star-Berry" farm lies immediately adjoining. Pine street is paved to its intersection with the addition line. It is to be graded through, as is also 11th street. There are water mains and sewers on Pine street and a sanitary sewer on Cedar street, in and paid for. Contractor T. H. Depew has just about finished clearing away the stumps of the big firs that were cut down years ago, and a petition is in circulation for opening North 9th street.

The addition is almost as level as a floor and will one day rank the Buckley addition for desirability. And lots are selling at from \$350 to \$500. That such prices obtain just off the paved district and only a mile from the business heart of the city is hardly to be realized, contemporary real estate men say. They express the opinion that the 127 lots will not last long at such prices. Anyhow, they say, there will never be another really close-in buy more on the "snap" order than the Muller-Lindahl addition.

1910 May 15, Tacoma Daily Ledger,  
Tacoma Public Library

### THE BULLITT ADDITION

This property consists of the most desirable tract in the North End. It is close to the Point Defiance car line, running from Lawrence street to Union avenue, and from North 18th to North 22nd street. There is not a bad lot in the addition.

All improvements are made, streets graded, sidewalks laid, sewer and water pipes put in.

Complete abstract of title is furnished with each sale, and conveyance is by warranty deed.

Reasonable restrictions prevent undesirable improvements being made and insure the construction of good houses.

No less than two lots will be sold to any one person, and not more than one house may be erected on any two lots. The distance to the Point Defiance car line is but one block.

Prices range from \$600 to \$750 per lot for inside lots, with only a proportionate increase for corners.

We believe these lots are better value for the money than can be secured in any other addition to Tacoma.

Terms are very easy, with a low rate of interest on deferred payments.

Plats may be secured at the office of the undersigned.

J. A. WOLBERT,  
1011 A Street.

1910 June 15, Tacoma Daily Ledger,  
Tacoma Public Library

College Park Historic District  
Name of Property

Pierce County, WA  
County and State

THE  
**BADGEROW**  
ADDITION

The Only Office is Located on the Grounds, 3001 No. 2nd St., Point Care.

**Lots Unsold**  
Price in the Market—  
Choice of this Addition:

Block 1, Lot 1	10.00
Block 1, Lot 2	10.00
Block 1, Lot 3	10.00
Block 1, Lot 4	10.00
Block 1, Lot 5	10.00
Block 1, Lot 6	10.00
Block 1, Lot 7	10.00
Block 1, Lot 8	10.00
Block 1, Lot 9	10.00
Block 1, Lot 10	10.00
Block 1, Lot 11	10.00
Block 1, Lot 12	10.00
Block 1, Lot 13	10.00
Block 1, Lot 14	10.00
Block 1, Lot 15	10.00
Block 1, Lot 16	10.00
Block 1, Lot 17	10.00
Block 1, Lot 18	10.00
Block 1, Lot 19	10.00
Block 1, Lot 20	10.00
Block 1, Lot 21	10.00
Block 1, Lot 22	10.00
Block 1, Lot 23	10.00
Block 1, Lot 24	10.00
Block 1, Lot 25	10.00
Block 1, Lot 26	10.00
Block 1, Lot 27	10.00
Block 1, Lot 28	10.00
Block 1, Lot 29	10.00
Block 1, Lot 30	10.00
Block 1, Lot 31	10.00
Block 1, Lot 32	10.00
Block 1, Lot 33	10.00
Block 1, Lot 34	10.00
Block 1, Lot 35	10.00
Block 1, Lot 36	10.00
Block 1, Lot 37	10.00
Block 1, Lot 38	10.00
Block 1, Lot 39	10.00

**Lots Unsold**  
Price in the Market—  
Choice of this Addition:

Block 1, Lot 1	10.00
Block 1, Lot 2	10.00
Block 1, Lot 3	10.00
Block 1, Lot 4	10.00
Block 1, Lot 5	10.00
Block 1, Lot 6	10.00
Block 1, Lot 7	10.00
Block 1, Lot 8	10.00
Block 1, Lot 9	10.00
Block 1, Lot 10	10.00
Block 1, Lot 11	10.00
Block 1, Lot 12	10.00
Block 1, Lot 13	10.00
Block 1, Lot 14	10.00
Block 1, Lot 15	10.00
Block 1, Lot 16	10.00
Block 1, Lot 17	10.00
Block 1, Lot 18	10.00
Block 1, Lot 19	10.00
Block 1, Lot 20	10.00
Block 1, Lot 21	10.00
Block 1, Lot 22	10.00
Block 1, Lot 23	10.00
Block 1, Lot 24	10.00
Block 1, Lot 25	10.00
Block 1, Lot 26	10.00
Block 1, Lot 27	10.00
Block 1, Lot 28	10.00
Block 1, Lot 29	10.00
Block 1, Lot 30	10.00
Block 1, Lot 31	10.00
Block 1, Lot 32	10.00
Block 1, Lot 33	10.00
Block 1, Lot 34	10.00
Block 1, Lot 35	10.00
Block 1, Lot 36	10.00
Block 1, Lot 37	10.00
Block 1, Lot 38	10.00
Block 1, Lot 39	10.00

**Honest, Now, You,**

**CLOSING OUT SALE**

**I SAY TO YOU,** seeking satisfactory home-site or investment, that it will be to your advantage to see me before buying elsewhere. I intend to dispose of every remaining unsold lot here advertised within the next 60 days. Deal direct with  
**E. M. BADGEROW, Owner.**

**200% Increase**

1910 May 22 p.16, Tacoma Daily Tribune, Tacoma Public Library



College Park Historic District  
Name of Property

Pierce County, WA  
County and State

**SOME GOOD BUYS**  
6-room modern, 1 lot 26x150, at So. 8th and O st. Cheap and on good terms.  
5-room modern cottage, with 2 fine lots, all improvements in and paid for, \$2,600 on good terms. On So. J st.  
Two 5-room cottages, modern, in North End; cheap or will trade. These are new and close to car.  
7-room house, in Badgerow add.; 2 lots, all improvements in and paid. This is a good buy or will trade.  
1 dandy corner lot in North End, 1 block to car; \$225, on terms.  
We have 3 and 4-room houses in South End that can be had very cheap and on rent payments, so stop the rent. See us at once for these won't last.  
**DUFF & CO.**  
311 Natl. Bank of Commerce Bldg.  
Phone A 4686

**SWELL LITTLE BUNGALOW  
IN BADGEROW ADDITION,  
ONLY \$2,400**  
It's a snap and goes for \$500 cash; \$20 per month, interest 6 per cent on deferred payments. Owner moving to California and must sell at once. Has 2 full lots, worth \$1,800, with all improvements in and paid. Has 4 large rooms and good sized bath room; bath tub hasn't been installed yet, but you can afford to complete bath room fixtures and still be several hundred dollars ahead of the game.  
**M. H. KOEHLER & CO.**  
Loans. Mortgages.  
106 10th st.

1920 Mar. 01, Tacoma Times, Library of Congress

1920 Mar. 01, Tacoma Times, Library of Congress

**BULLITT ADDITION  
PLACED ON MARKET**  
**Attractive North End Subdivision Will  
Be Strictly Limited to Residences  
—Over \$50,000 Worth of Im-  
provements Put In.**  
Tacoma investors in exclusive residence property will be given another opportunity to purchase high-grade lots for North End homesites this week when J. A. Wolbert put the Bullitt addition on the market.  
This addition, containing about 320 lots, is bounded by North 18th and 24th streets, Lawrence street and Union avenue. It is one block from the Point Defiance car line.  
Over \$50,000 worth of improvements have been put into the addition and only recently completed. The streets are graded, cement walks have been built, sewer and water pipes laid and everything has been done to make it a high-class, acceptable addition for home builders.  
One feature of the subdivision is that no lots will be sold to those desiring to build apartment houses or store structures. The addition is an exclusive residence property and apartment houses and stores have been prohibited for five years. The addition is one of the last new ones on the Point Defiance line.

**Badgerow Addition  
\$4,100**  
1924 4-ROOM bungalow, with fireplace, many built-in features and two full lots, located at 3105 North 19th street, 2 additional rooms in attic, for immediate sale on very easy terms. Call at house, or see  
**Gerald Longstreth**  
634 Provident Bldg.  
Main 236

1920 January 26, Tacoma Daily Ledger,  
Tacoma Public Library

1924 November 16, Tacoma Daily Ledger,  
Tacoma Public Library



College Park Historic District  
 Name of Property

Pierce County, WA  
 County and State

# THE TACOMA SUNDAY LEDGER

TACOMA, SUNDAY, NOVEMBER 11, 1920

MEMBER ASSOCIATED PRESS

## Tacoma's Bungalow Colony

as seen from an Oakland Sensible Six









**TACOMA HOMES ARE AMONG THE FINEST**

found in Oakland Sensible Six Offers Views of Beautiful Little Bungalows

By Mitchell Scribner

THE BATTLE over local bungalow homes in the Tacoma area has been a long and hard one. It has been a struggle between the old and the new, between the traditional and the modern. The bungalow movement has been a great success, and the homes built in Tacoma are among the finest in the country.

One of the most attractive bungalows is that of Mr. J. G. Merrill, 2024 North 20th street. It is a two-story bungalow with a French window on the second floor. The house is built of brick and has a very attractive appearance. It is a fine example of the bungalow style.

Another fine bungalow is that of Mr. J. L. Lamb, 1812 North 20th street. It is a one-story bungalow with a French door opening into the living room. The house is built of brick and has a very attractive appearance. It is a fine example of the bungalow style.

One of the most attractive bungalows is that of Mr. J. G. Merrill, 2024 North 20th street. It is a two-story bungalow with a French window on the second floor. The house is built of brick and has a very attractive appearance. It is a fine example of the bungalow style.

**Motorists! Clip This; These Cars Are Stolen**

THESE are the list of unaccounted automobiles which the police department has been unable to locate. If you have any information regarding these cars, please contact the police department.

No.	Make	Year	Color	Where Stolen
1	Ford	1918	Black	Washelli
2	Overland	1918	Black	Washelli
3	Ford	1918	Black	Washelli
4	Ford	1918	Black	Washelli
5	Ford	1918	Black	Washelli
6	Ford	1918	Black	Washelli
7	Ford	1918	Black	Washelli
8	Ford	1918	Black	Washelli
9	Ford	1918	Black	Washelli
10	Ford	1918	Black	Washelli

**MEN WHO BUILT - RED REPUTATION STILL AT HELM**

Factory Executive Organization Stands Today Just as Originally Formed 15 Years Ago

THE men who built the reputation of the factory executive organization are still at the helm. The organization has stood the test of time and remains as strong as ever. It is a testament to the leadership and vision of its founders.

The organization has been successful in many ways. It has improved the lives of its members and has made a significant contribution to the community. It is a source of pride and honor for all who are associated with it.

**Your Automobile Should Be Accident Insurance**

Highway Bulletin

Published by E. A. White, County Register

It is essential for every automobile owner to have accident insurance. This insurance provides financial protection in the event of an accident. It covers the cost of repairs, medical expenses, and other damages. It is a wise investment for every driver.

There are many insurance companies that offer automobile accident insurance. It is important to compare the policies and choose the one that best meets your needs. Contact your insurance agent for more information.

1920Nov20, Tacoma Sunday Ledger, p. C1, Tacoma Public Library.



College Park Historic District  
Name of Property

Pierce County, WA  
County and State



## MAGNIFICENT BUNGALOW

THIS BEAUTIFUL HOME was built by the owner under contract for his own home. A transfer in business makes it necessary for him to consummate a quick sale. The home is only three years old and occupies one of the finest corners at North 17th and Alder, with paved street and all assessments paid. It is at the very entrance of the campus of the College of Puget Sound, and we have no hesitancy in saying values are sure to enhance in this district. From the exterior the house is one of the most attractive in the entire city. There is an excellent lawn and choice shrubs.

ON ENTERING you will find a circular walk leading to a large concrete porch. There is a living room 14x20 with massive fireplace, a music room or den separated from the living room by large French doors, a dining room 14x14, large cabinet kitchen with six coats of white enamel, breakfast room, two large sleeping rooms, full bath with recess tub, with terrazo floor on the main floor. The floors are of triple construction, two fir floors with oak floor for finish. The electrical fixtures are of the very best, having many outlets. Besides having an excellent furnace, this home is wired for electric heat and cooking. There is a basement approximately 28x35 feet, and laundry. On the second floor you will find one sleeping room and large attic for storage. There is a large garage with concrete floor. We ask you to compare the value of this home with anything on the market in the city. Price \$6,850; can be sold as low as \$1,000 cash. We are exclusive agents. Evenings call Proctor 3743.

1926 Jul. 1926, Tacoma Daily Ledger, pg. 13, Tacoma Public Library



College Park Historic District  
Name of Property

Pierce County, WA  
County and State

## College Addition Has Building Boom



Photos by L. L. Clemans.

Upper left—House on the corner being built by Chris Jorgenson; next to it on the left is the home of J. M. Joseph. Upper right—House on the corner owned by Ed Driscoll; next to it the home of Helgey Anderson. Lower left—Home of A. J. Zeh; next to it the cottage of Howard A. Collier. Lower right—House being built by A. J. Zeh. These houses are on the four corners of the intersection of North 12th and Cedar streets.

The old Star berry farm of a few years ago has completely disappeared under the onward march of prosperity. A little more than a year and a half ago, the Peat's barn stood in the center of what is now North 12th street and the territory bounded by Junett, Lawrence, North 10th and North 13th streets was a barren waste. Today, after 18 months, more than 30 new homes have been erected in this small district and more are in the making or in the planning.

When the platted ground was offered for sale by a building and loan association, the property was eagerly purchased for the most part by contractors who wished the sites for building of modern homes. The close proximity to the College of Puget Sound made this addition all the more desirable.

And while the contractors have been busy building homes of durability for fastidious purchasers, the city has been busy and the streets throughout the addition are being improved and nearly all the sidewalks in the territory covered have been built. A portion of Cedar street lying between 10th and 11th streets has not been opened, but the condemnation proceedings are now in the superior court and it will be but a short time until that part of the street will be improved.

Among the contractors who have taken an active part in the building up of this addition is A. J. Zeh, who has already completed four modern dwellings and has another four ready to put under construction. The addition is reached by street car, by riding to the north end of the K street line and walking two blocks to the center of the addition. It is thought that as soon as the improvements upon the streets leading to the college campus are completed, that the K street line will be extended through to the college grounds.

BEAVER BARRIORS

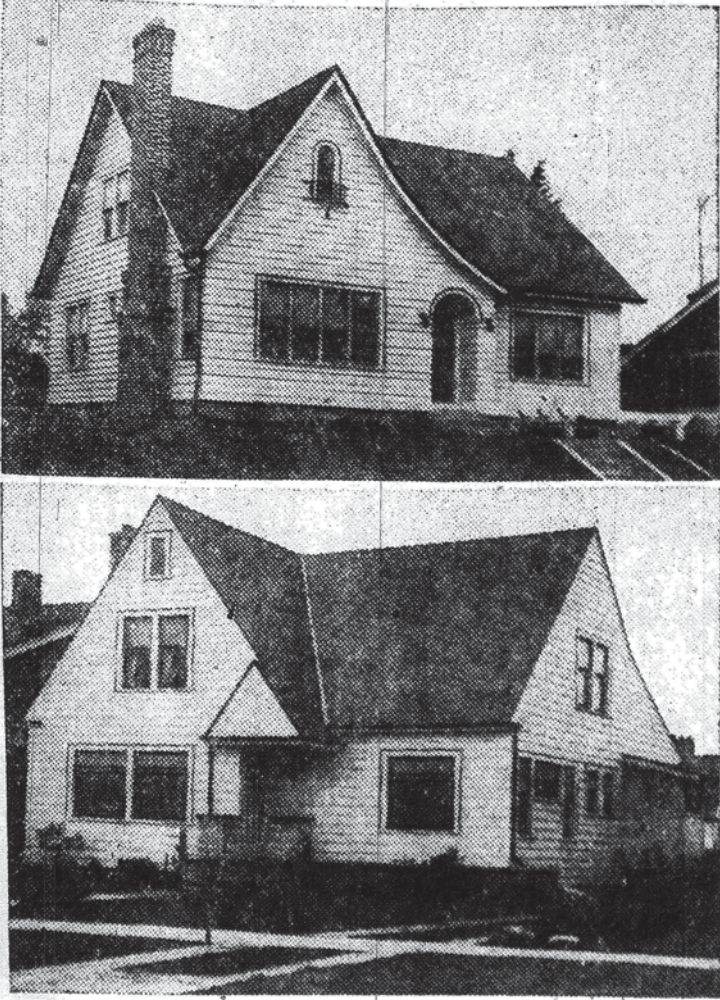
1928 Dec. 09, Tacoma Sunday Ledger, p. E.7, Tacoma Public Library



College Park Historic District  
Name of Property

Pierce County, WA  
County and State

## Two New Homes Recently Built in C. P. S. District



Two attractive new homes in the College of Puget Sound district are shown in the photographs above. At the top is the house at 1308 North Cedar street recently completed by A. Madsen and purchased by Joseph Rembowski, realtor. There are six rooms, with garage and hot air furnace in the basement. The woodwork is of mahogany.

The house in the lower picture is at 3115 North 15th street and is owned by J. B. Woodman. This contains seven rooms.

1928 Oct. 07, Tacoma Sunday Ledger, Tacoma Public Library

College Park Historic District  
Name of Property

Pierce County, WA  
County and State



**CHARMING**  
*Is Just the Word*

This charming new Tacoma Home, situated at 3115 North 13th was built for sale by Mr. J. A. Jurdock, Tacoma Contractor. It is constructed throughout with building materials from the John Dower Lumber Company which means it contains Maximum Home Value.

Every foot of floor space has been used to good advantage. There is a living room and dining room with coed ceilings, kitchen and breakfast nook, four bedrooms and a full basement.

The thoroughly modern plan with its unusual exterior and most conveniently arranged interior has all the requirements of a true home for a fairly large family. It is one of Tacoma's "Better Homes" built with "Better Lumber" from Dower's.

**John Dower Lumber Co.**

1929 Apr. 14, Tacoma Daily Ledger, p. B10, TPL



**BEAUTIFUL HOME**  
**Near College of Puget Sound**  
3115 North 13th St.

**NEW HOME**, 6 rooms (2 bedrooms upstairs), basement, hot air furnace, sawdust burner, hardwood floors throughout and high quality plumbing. Beautiful lawn and shrubbery.

**ELECTRIC** range, drapes, curtains and window shades, stair carpet, linoleum, lawn mower, hose, screens, miscellaneous tools and implements go with place.

**OWNER** has been transferred to California and has instructed me to sell for \$6,500, on reasonable terms. If you want a real home, let me show you this one.

**HARRY V. SMITH**  
Provident Building  
Mpls 6496

1929 Nov. 24, Tacoma Daily Ledger p. D1, TPL



College Park Historic District  
Name of Property

Pierce County, WA  
County and State

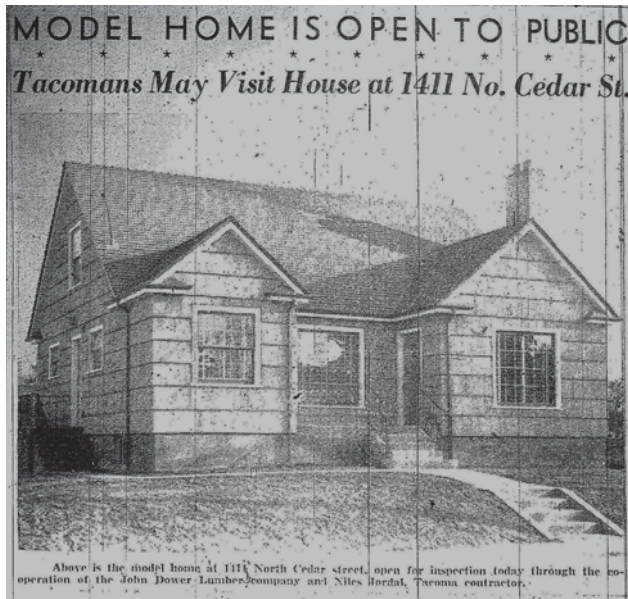


1936 Jan. 12, Tacoma Sunday Ledger, p. B6, TPL



College Park Historic District  
Name of Property

Pierce County, WA  
County and State



1936 Dec. 13, Tacoma Sunday Ledger p. B8, TPL



1942 Apr. 18, Tacoma News Tribune, p. A9, TPL



1936 May 17, Tacoma Daily Ledger p. B8, TPL



College Park Historic District  
Name of Property

Pierce County, WA  
County and State



**COLLEGE DISTRICT**

IN THAT newer and attractive section lying north of the college campus, a modern 7 room home with 1 bedroom and tiled bath on first floor, 2 bedrooms and bathroom on the second. An excellent looking patio and 2 car garage. Grounds 60x120 feet in rolling lawn attractively planted. See it at 3324 North 19th, but do not disturb residents. Price \$6,750.

**MIDDLE NORTH END**

NEWLY and charmingly decorated; neatly roofed and in general good repair. A comfortable home located on paved street and paved alley in an excellent north end district. Complete and modern living quarters of 4 rooms and bath on first floor and 3 rooms upstairs. There are two bedrooms on lower's market offering no more for \$3,000. See it at 3035 North 14th and be admitted.

**SIDNEY B. SMITH**  
Realtor

818 First Building  
322nd Ave 3642

1942 Apr. 21, Tacoma News Tribune p. 18, TPL

**Puget Sound College District Bargain Deluxe**  
**3424 North 21st Street**  
**Open House Today -- 2 to 5 p.m.**



This attractive home has 14½'x24' living room, guest size dining room, fireplace, 3 bedrooms, double plumbing, hardwood floors, full basement, auto. oil air conditioning furnace, 1-car garage and many other features. Beautiful level park-like landscaped corner location with paved street. Very desirable location among other fine homes. **IMMEDIATE POSSESSION. DRASTIC PRICE REDUCTION FROM \$19,900 TO \$14,500 FOR QUICK SALE. SEE THIS SURPRISINGLY GOOD VALUE TODAY.** Mr. Squires will show you through or call Residence, MA 1988, C-35, RICHAVEN, REALTORS, 2012 8th Ave. BR 1718.

1950 Jul. 15 Tacoma News Tribune p. A2, TPL